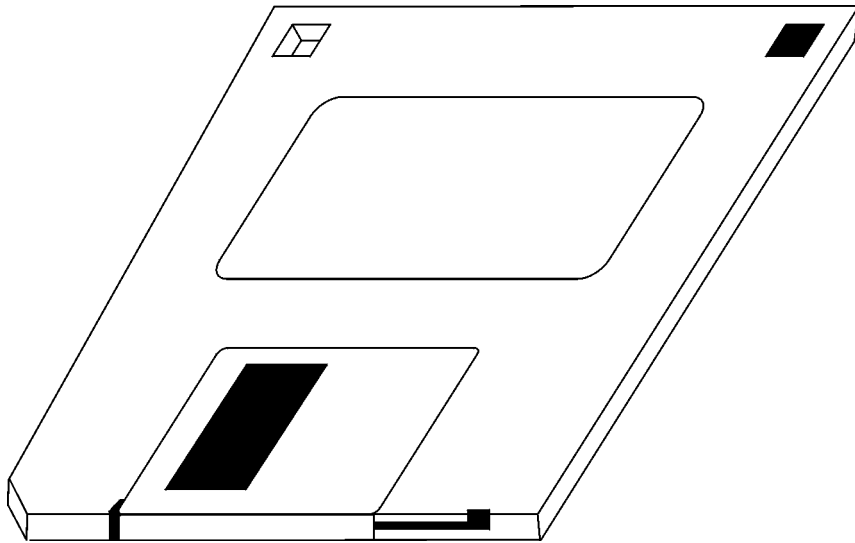

*SCO Unixware 7.01 Driver Installation
Release Notes*



COMPUTONE
Corporation

1060 Windward Ridge Parkway
Suite 100
Alpharetta, GA 30005-3992
U.S.A.

No part of this publication may be reproduced, transmitted, transcribed, stored in a retrieval system, or translated into any language, in any form or by any means (electronic or otherwise) without the prior written permission of Computone Corporation.

Disclaimer: Computone Corporation ("Computone") makes no representations or warranties with respect to the contents hereof, and specifically disclaims any implied warranties of merchantability or fitness for any particular purpose. Furthermore, Computone reserves the right to revise this publication and make changes from time to time to the contents hereof, without obligation of Computone to notify any person of such revisions or changes.

Support Information: If you require technical support, contact your Computone dealer or Computone Technical Support. The Computone Technical Support staff can be reached by phone at the following numbers, from 8:30 a.m. to 8:00 p.m. Eastern time, Monday through Friday:

(800) 241-3946 ext. 2002
(770) 625-0000 ext. 2002
(770) 625-0013 (FAX)

Technical Support can be contacted by email at the Internet address support@computone.com

Trademarks: Computone and IntelliServer are trademarks of Computone Corporation. All other brand names or product names are trademarks or registered trademarks of their respective corporations.

SCO Unixware 7.01 Driver Installation

Upon completion of this subject, user will successfully install the IntelliPort II driver on SCO Unixware 7.01.

Installation Procedure

Use the following procedure to install the SCO Unixware 7.01 driver:

1. Insure all backups are successful prior to installing the driver on this operating system.
2. Insert the diskette in the drive and enter “pkgadd -d diskette1” at the # prompt.

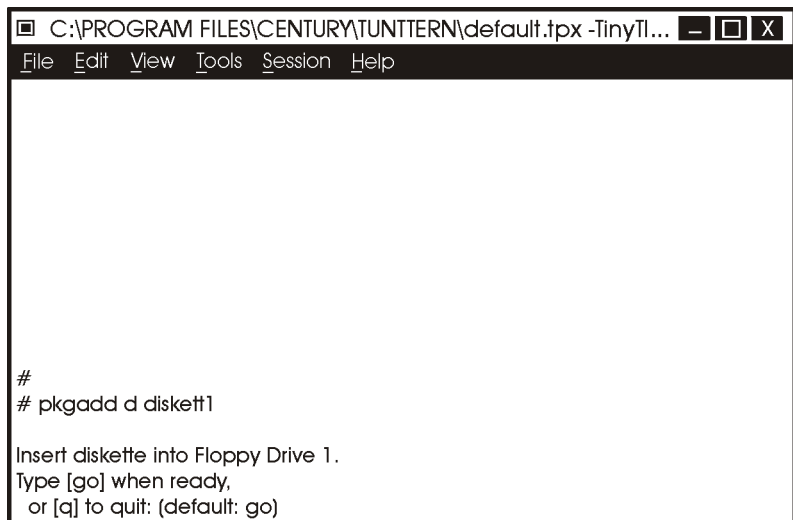


Figure 1. Selecting the Drive

3. Type “go” when the diskette is loaded and you are ready to proceed.

```

C:\PROGRAM FILES\CENTURY\TUNTERN\default.tpx -TinyTI...
File Edit View Tools Session Help

#
# pkgadd -d diskett1
Insert diskette into Floppy Drive 1.
Type [go] when ready,
  or [q] to quit: (default: go)

Installation in progress. Do not remove diskette.

The following packages are available:
  1 ip2  Computone Intelliport Plus STREAMS Driver
      (i386, ISA, EISA, MCA, PCI) 2.0.1

Select package(s) you wish to process (or 'all' to process
all packages). (Default: all) [?, ??, quit]: all

```

Figure 2. Selecting the Software

KEY	CTRL-key	FUNCTION
F1	Ctrl-I	Help
F2	Ctrl-O	List Choices
F3	Ctrl-E	Save
F4	Ctrl-X	Cancel
F5	Ctrl-C	Copy Line
F6	Ctrl-K	Clear Field
ENTER		Next Field
PgUp	Ctrl-F	Next Page
PgDn	Ctrl-B	Previous Page
Function key are required to install the driver. As you know, some terminal emulations may not recognize function keys. Therefore, use the control key combinations to assist you if this occurs.		

4. Press Enter to select “all” driver software to install.

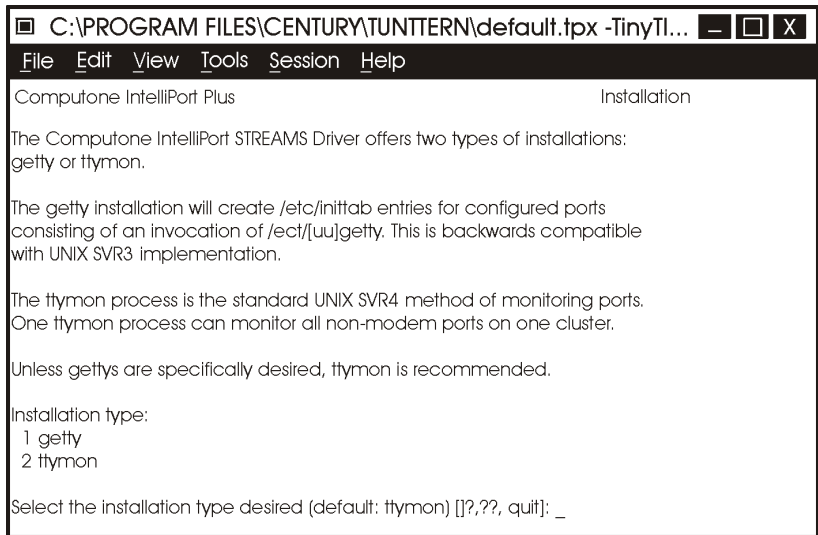


Figure 3. Selecting Installation Type

5. Choose port monitor type (default getty)

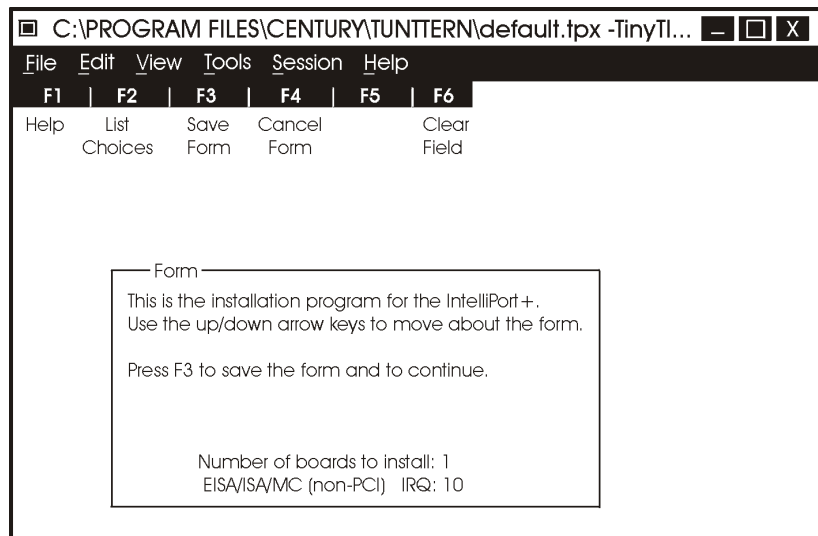


Figure 4. Selecting Number of Boards and IRQs

6. Choose number of boards and board IRQ (press F2 for choices). Use the *down arrow key* to move the cursor to the **IRQ** selection (Press *F2* for choices). After making your selection, press *F3* to save the form and go to the next screen.

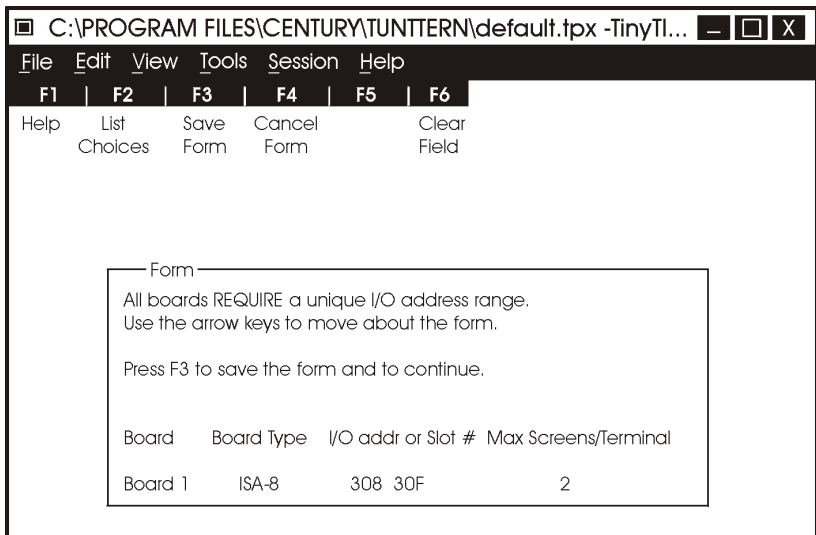


Figure 5. Selecting Board Type and I/O Addresses

From this screen you will select the type of board(s) you are installing, I/O address range (for each board) and the number of screens per terminal that you want to support.

7. Move the cursor to **Board Type** and press *F2* for your choices. Move the arrow to your selection and press *Enter*.

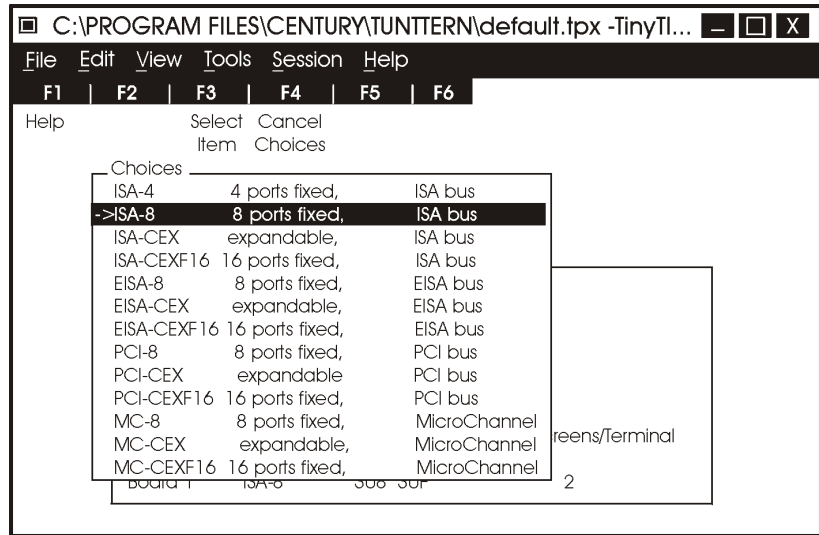


Figure 6. Selecting Board Type

8. Move the cursor to **I/O address or Slot #** and press *F2*. Choose the address range, move the arrow to your selection and press *Enter*.
9. Move the cursor to **Max Screens/Terminal** and press *F2*. Move the cursor to your selection and press *Enter* (see Table 1). Press *F3* to save form and continue.

If you specify four or more screens per terminal (one main screen and three or more alternate screens), the installation program prompts you to confirm the number of screens specified. Most terminals support three or less screens.

Table 1. Number of Screens Selected

Number of Screens	Enables IntelliView Main Screen Plus
1	Zero (0) Alternate Screens
2	One (1) Alternate Screen
3	Two (2) Alternate Screens
4	Three (3) Alternate Screens
5	Four (4) Alternate Screens
6	Five (5) Alternate Screens
7	Six (6) Alternate Screens
8	Seven (7) Alternate Screens

NOTE: To change **Max Screens/Terminal** later, reinstall the drivers.

- Set the card switches to match those shown below. Press *F3* to save form and continue to next screen.

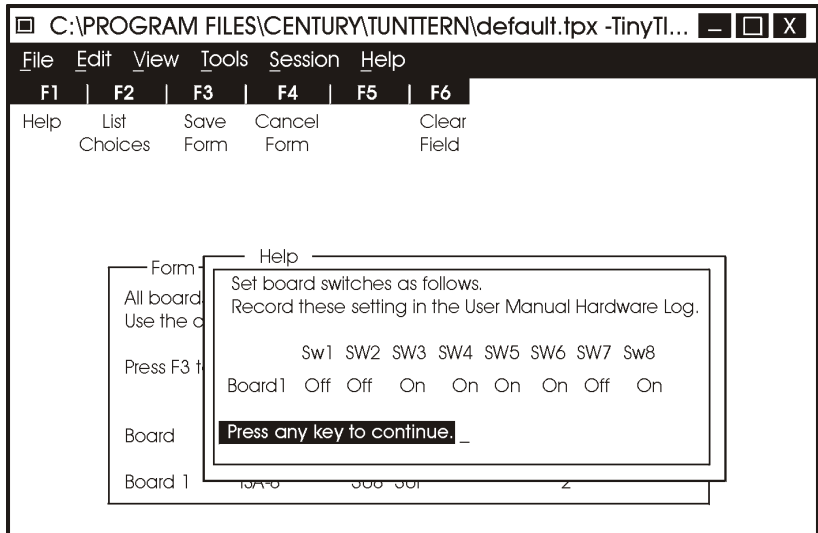


Figure 7. Setting the Card Switches

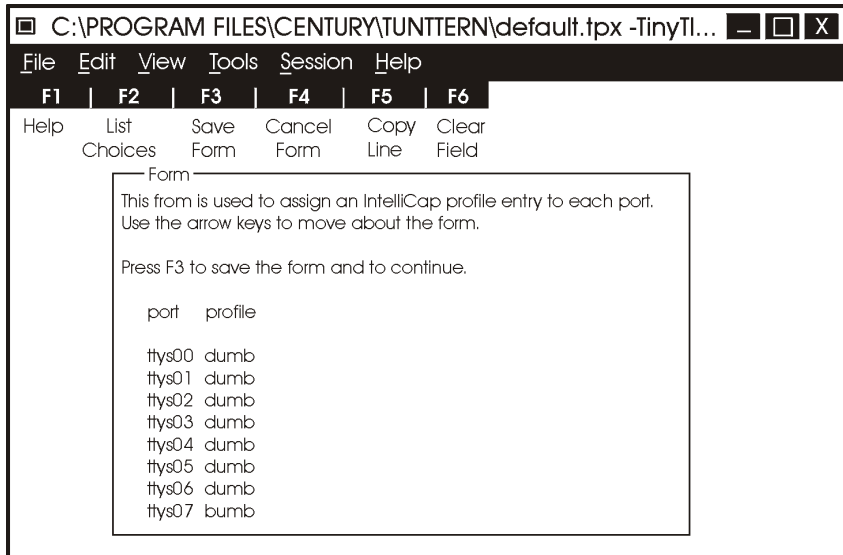


Figure 8. Update Profiles Screen

Upon successful driver installation, the port configuration menu is displayed.

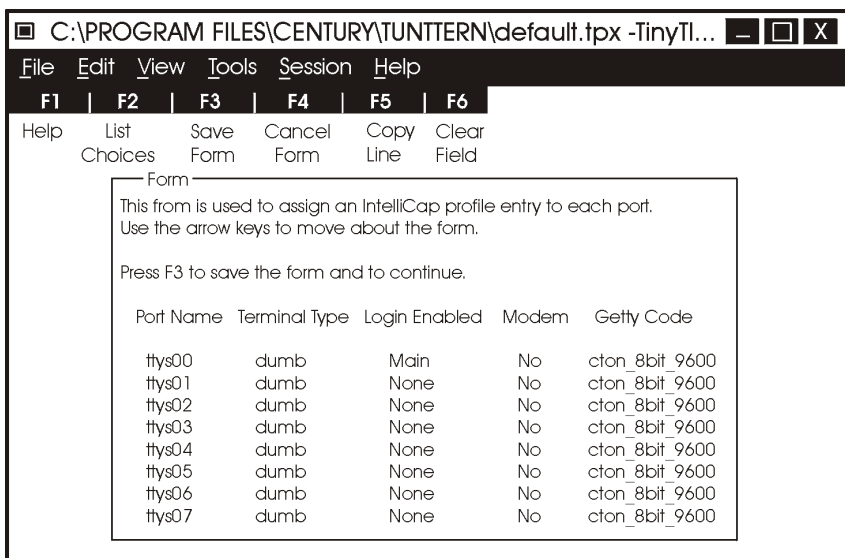


Figure 9. Configuring the Ports

11. Update your individual ports, as needed. Press *F3* to save the form and continue.

The following screen is displayed.

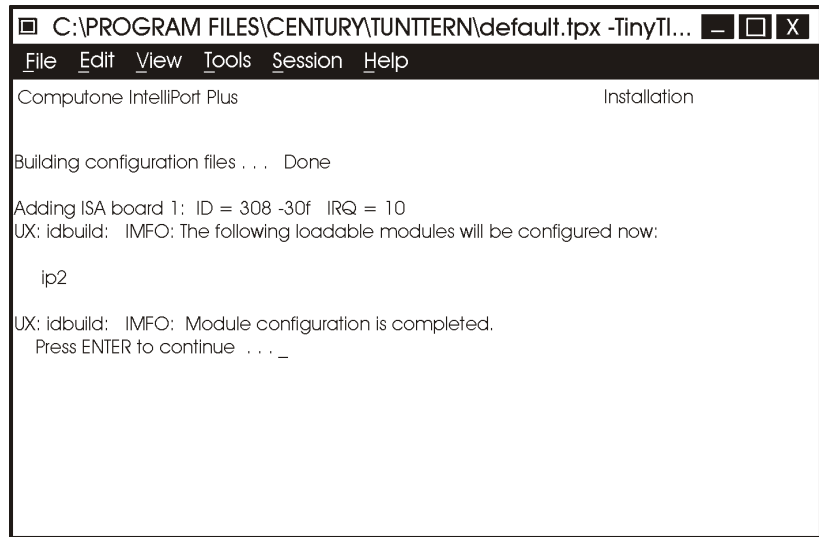


Figure 10. Building Configuration Files

The files shown below have been added or modified by the Computone driver.

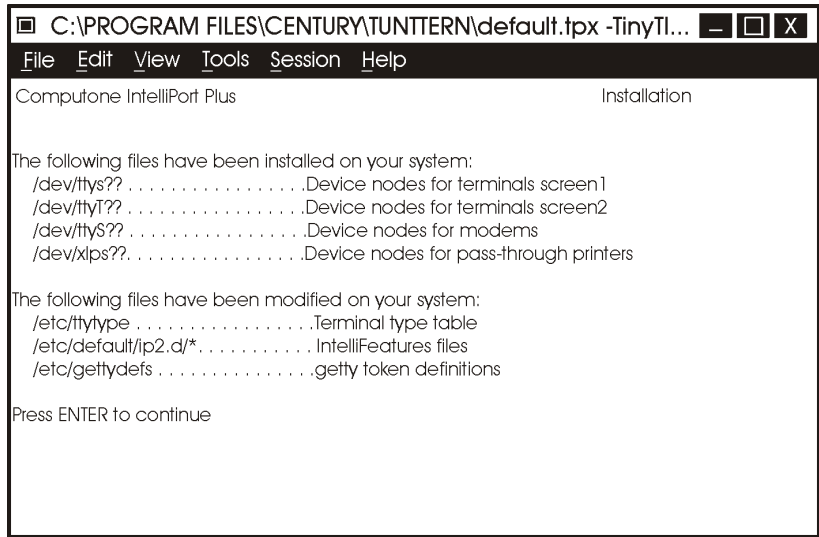


Figure 11. Files Added or Changed

Your configuration software load is complete. Choose “q” to quit.

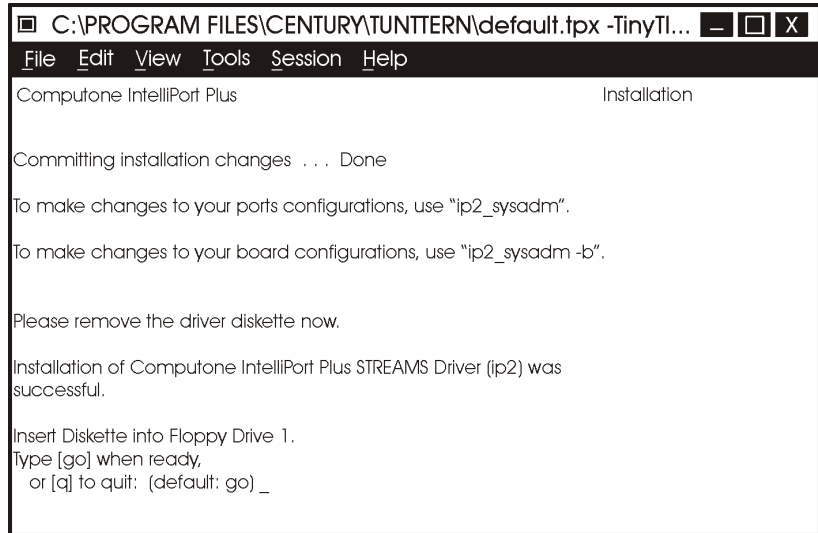


Figure 12. Exiting Installation

■ End of Procedure